

# HP125 (110Q-3) Quintuplex Plunger Pump

## Specifications

### Pump Size:

maximum plunger size x stroke length, in.(mm):  
3.000 x 3.500 (76.2 x 88.9)

**Rated BHP (kW) at 440 RPM:** 110 (82)

**Rated plunger load, pounds (kg):** 5090 (2309)

**Maximum discharge pressure:** psi (kPa)

"L" model: 1037 (7149)

"M" model: 2454 (16922)

"MS" model: 5121 (35306)

"H" model: 10000 (68948)

### Crankshaft extension:

Diameter, in.(mm): 3.250 (82.55)

Length, in.(mm): 8.31 (211.1)

Keyway width x depth, in.(mm):

3/4 x 3/8 (19.05 x 9.525)

Maximum recommended sheave diameter,  
in.(mm): 38 (965.2)

For larger sizes: **Contact Factory**

### Pinion shaft extension,

if gear reducer is supplied, in.(mm)

For belt or chain drive: **Contact Factory**

For direct drive: Diameter: 2.000 (50.8)

Length: 4.250 (108.0)

Keyway width x depth:

1/2 x 1/4 (12.70 x 6.35)

### Accessory gear reduction unit:

3.00:1, 3.12:1, 3.23:1, 3.36:1, 3.49:1,

3.62:1, 3.78:1, 3.94:1, 4.11:1, 4.29:1,

4.48:1, 4.69:1, 4.93:1, 5.17:1

### Oil Capacity, gallons (L)

Crankcase: 5 (18.93)

Gear Reducer - varies with ratio:

1.25 to 1.50 (4.73 to 5.68)

### Weight, pump only on

wood shipping skids, pounds (kg)

"L" model: 1670 (757)

"M" model: 1500 (680)

"MS" model: 1650 (748)

"H" model: 1750 (794)

### Standard Materials for Fluid Ends:

"L" model

Cast Ductile Iron

Cast Nickel-Aluminum-Bronze

Cast Duplex Stainless Steel

Cast/Forged/Plate Carbon Steel

"M" model

Cast Ductile Iron

Cast Nickel-Aluminum-Bronze

Cast Duplex Stainless Steel

Cast/Forged/Plate Carbon Steel

"MS" model

Forged Nickel-Aluminum-Bronze

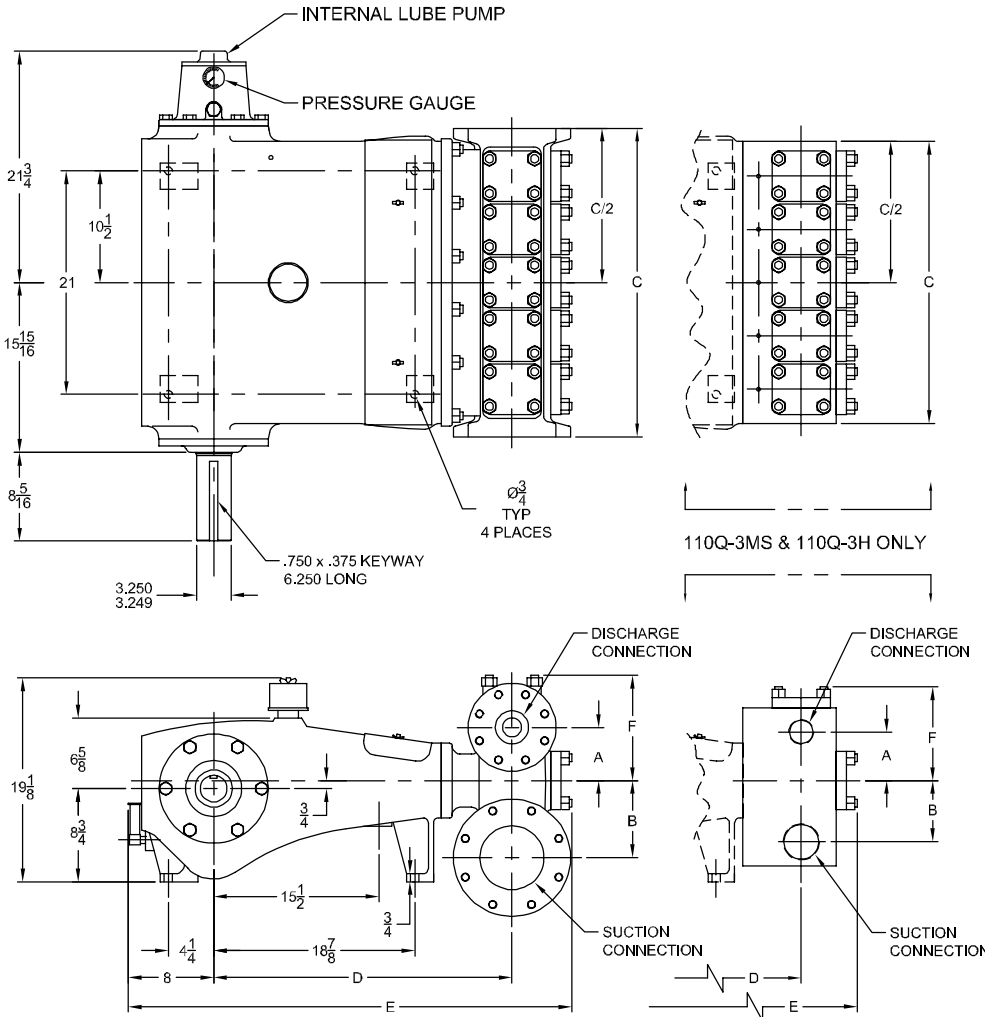
Forged 15-5 Stainless Steel

Cast/Forged/Plate Carbon Steel

"H" model

Forged Carbon Steel

Forged 15-5 Stainless Steel



Pump Model	Flange Connections		Dimensions (Inches)					
	Discharge Connection Sizes	Suction Connection Sizes	A	B	C	D	E	F
110Q-3L	3 (76.2)-ANSI 600 FF	6 (152.4)-ANSI 150 FF	5	7 1/4	29	28	41 5/8	9 7/8
110Q-3M	2 (50.8)-ANSI 1500 FF	3 (76.2)-ANSI 300 FF	3 7/16	5 3/4	30	27 3/16	40 7/8	8 1/8
110Q-3MS	2 (50.8)-11 1/2 NPT	3 (76.2)-8 NPT	4 9/16	5 3/4	26 1/2	26 7/8	40 1/8	8 7/8
110Q-3H	1 (25.4)-11 1/2 NPT	1 1/2 (38.1)-11 1/2 NPT	3 7/8	4 3/8	28	25 3/4	39 7/8	7 3/4

**IEQ Industries**

P.O BOX 123 \* ADA, \* MI 49301 \* USA  
PHONE 800.544.9053 \* FAX 888.796.2653 \*  
email: [info@gaso.com](mailto:info@gaso.com)  
On the Web at [www.gaso.com](http://www.gaso.com)

**NATIONAL OILWELL VARCO**